

Series
VM - PM

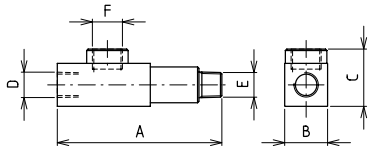
Pressure gauge accessories

PRESSURE GAUGE ADAPTORS

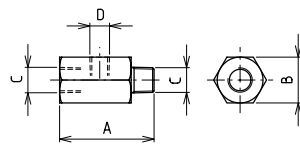
The FPT system can be used to mount the pressure gauge directly on the pump head. The pressure gauge adaptors are required on pumps and valves when the pressure gauge is not directly installed.



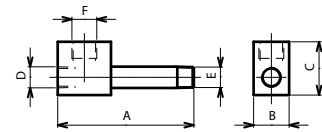
PM-39 PM-351



PM-355 PM-356



PM-356

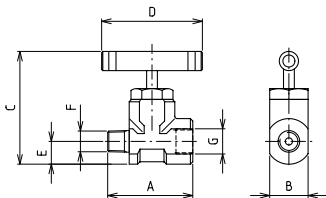
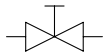


	MODEL	DIMENSIONS in mm					
		A	B	C	D	E	F
	PM - 346	115	30	45	3/8" NPT	3/8" NPT	G 1/2"
	PM - 351	115	30	40	3/8" NPT	1/4" NPT	G 1/2"
	PM - 355	68	27	1/4" NPT	1/4" NPT	-	-
	PM - 356	68	32	3/8" NPT	1/4" NPT	-	-

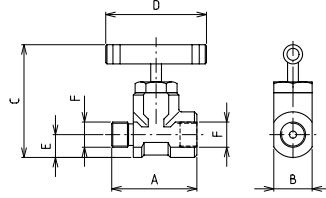
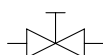
PRESSURE GAUGE SHUT-OFF VALVES

The pressure gauge shut-off valves cut off the pressure to the gauge so that it can be excluded when readings are not required.

VM-5C



VM-5G



	MODEL	MALE END	FEMALE END	DIMENSIONS in mm				
		F	G	A	B	C	D	E
	VM - 5C	3/8" NPT	G 1/2"	68	32	94	84	19
	VM - 5G	G 1/2"	G 1/2"	68	32	94	84	19